

Pamela Atkinson Homeless Trust Fund

Making a Difference for Our Homeless Friends Statewide

Donate on Your Utah State Tax Form

Your small donation can make a **BIG** difference



*Donations are leveraged with state and federal funding, increasing value. Dollar amounts are approximate.



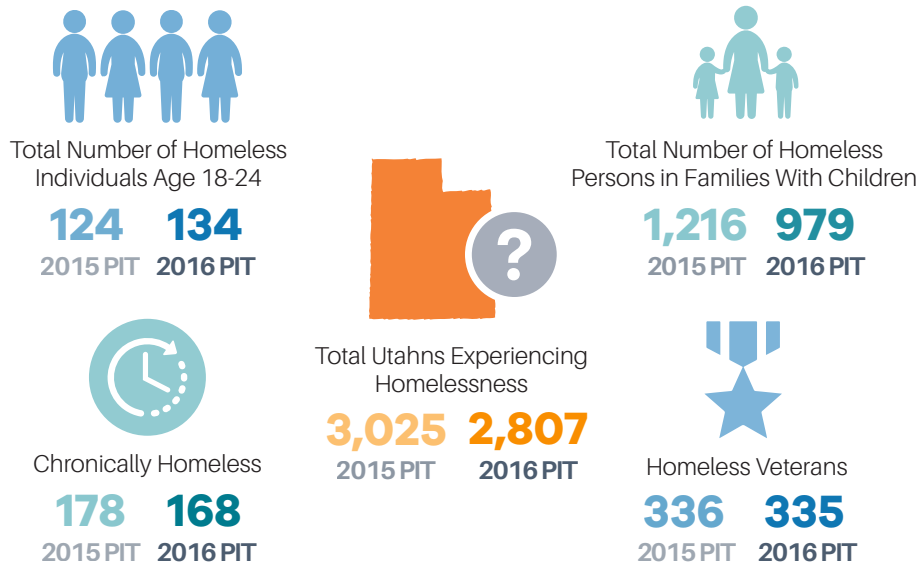
Organizations Supported by the Fund

- Bear River Association of Governments, Logan
- Canyon Creek Women’s Crisis Center, Cedar City
- Catholic Community Services, Salt Lake City
- Center for Women and Children in Crisis, Juab, Utah and Wasatch Counties
- Citizens Against Physical and Sexual Abuse, Logan
- Community Action Services, Provo
- D.O.V.E. Center, Cedar City
- Family Connection Center, Davis County
- Family Promise Salt Lake, Salt Lake City
- Five County Association of Governments, St. George
- Fourth Street Clinic Wasatch Homeless Health Care, Salt Lake City
- Friends of the Coalition, Provo
- Golden Spike Outreach, Provo
- Homeless Veterans Fellowship, Ogden
- Housing Assistance Management Enterprise, Salt Lake City
- Housing Authority of the County of Salt Lake, Salt Lake County
- Iron County Care and Share, Cedar City
- Mountainlands Community Housing Trust, Park City
- New Horizons Crisis Center, Richfield
- Community Resources and Development Division, Salt Lake County
- South Valley Sanctuary, West Jordan
- St. Anne’s Center, Ogden
- Switchpoint, St. George
- The Road Home, Salt Lake City
- Tooele County
- Uintah Basin Association of Governments, Vernal
- Uintah County
- Utah Legal Services, statewide
- Valley Behavioral Health, statewide
- Volunteers of America, statewide
- Wasatch Mental Health Services, Provo
- Weber Housing Authority, Ogden
- Your Community Connection, Davis County

Needs and Funding for Utah Homelessness

Utah 2015 PIT and 2016 PIT Counts Comparison

The Point-in-Time Count is a federally mandated count that occurs in January each year and allows the state to get a broad set of data for that one point in time. In addition to shelter counts, hundreds of volunteers fan out across the state and conduct in-depth surveys with people spending the night in tents, cars, parks, and other places not meant for human habitation.



Homeless to Housing Reform Fund 2016

As a part of the 2016 legislative session, a coalition led by Salt Lake County and Salt Lake City governments requested \$27 million for homeless services. The primary intent of the funding was to build and operate new shelters in the Salt Lake area with additional funds to support a statewide response to homelessness. This effort resulted in \$9.25 million awarded in FY 2017 and includes both state general funds and federal Temporary Assistance for Needy Families (TANF) funds.

Support for expanded services in Clearfield, Logan, Ogden, Provo, Salt Lake City, St. George and West Jordan	\$1.96 million
Funds to keep the Midvale family shelter open year-round	\$1.04 million
Set-aside for new resource center acquisition and construction	\$6.25 million

jobs.utah.gov 

Equal Opportunity Employer/Program

Auxiliary aids and services are available upon request to individuals with disabilities by calling 801-526-9240. Individuals with speech or hearing impairments may call the Relay Utah by dialing 711. Spanish Relay Utah: 1-888-346-3162.